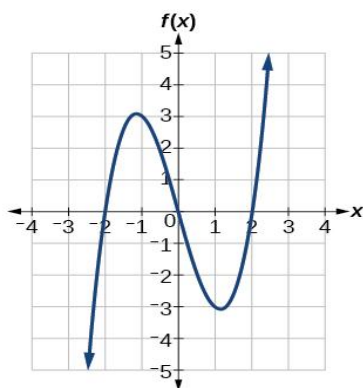


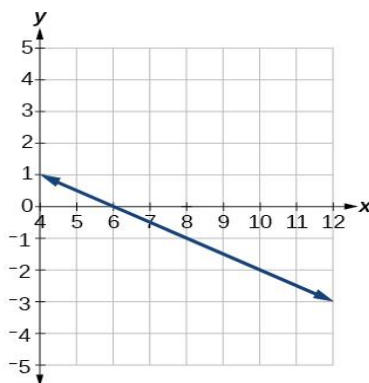
1.2 Practice Activity

Practice 2-1-1:

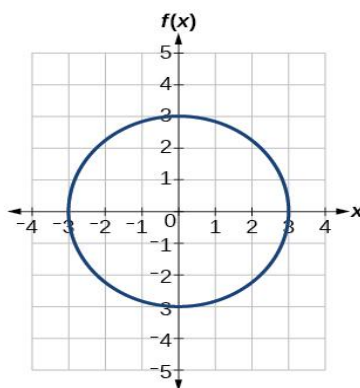
Determine if it's a function.



(a)



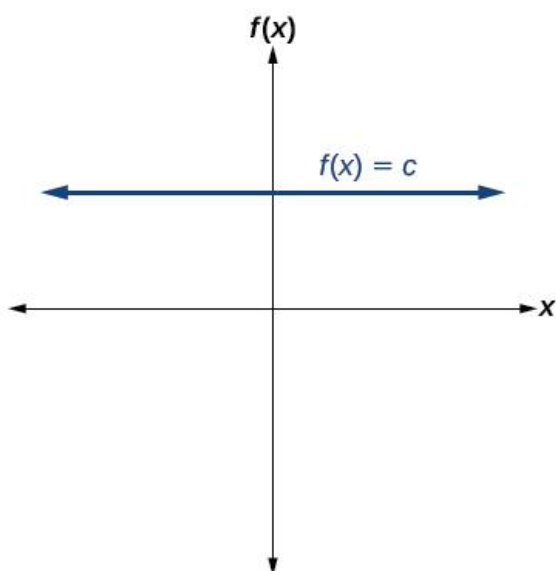
(b)



(c)

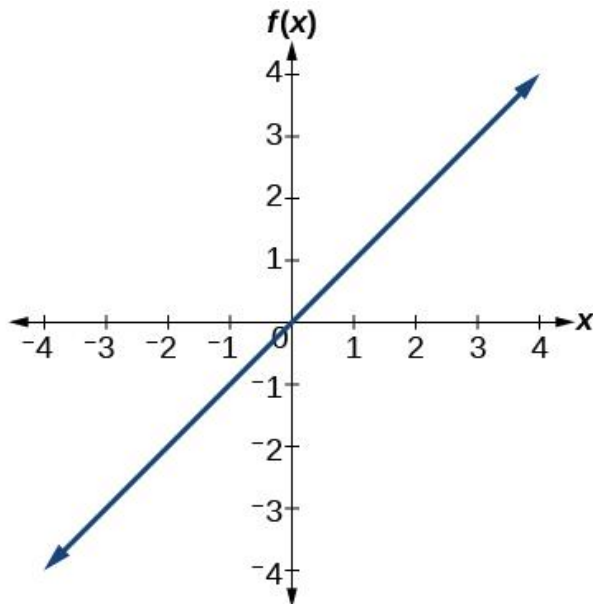
Practice 2-2-1:

Select the correct answer. Find the domain and range of the function f whose graph is shown.



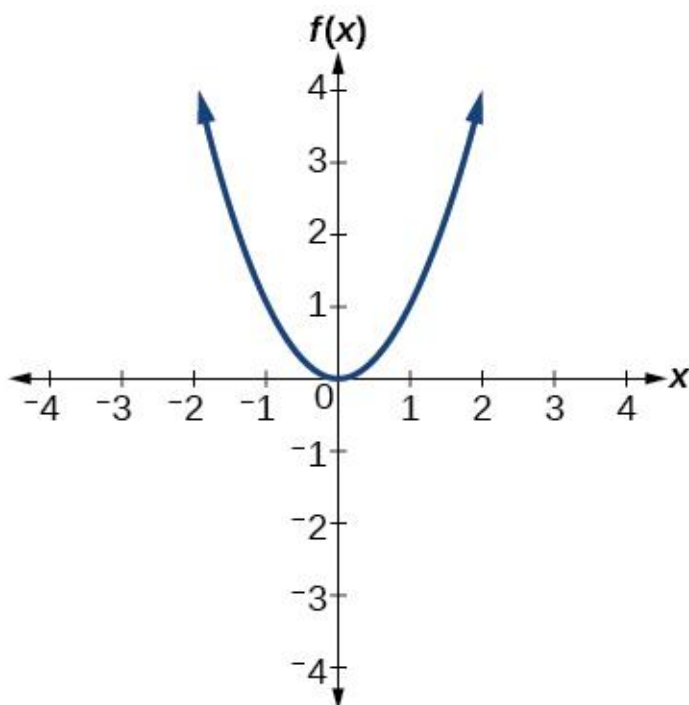
Practice 2-2-2:

Select the correct answer. Find the domain and range of the function f whose graph is shown.



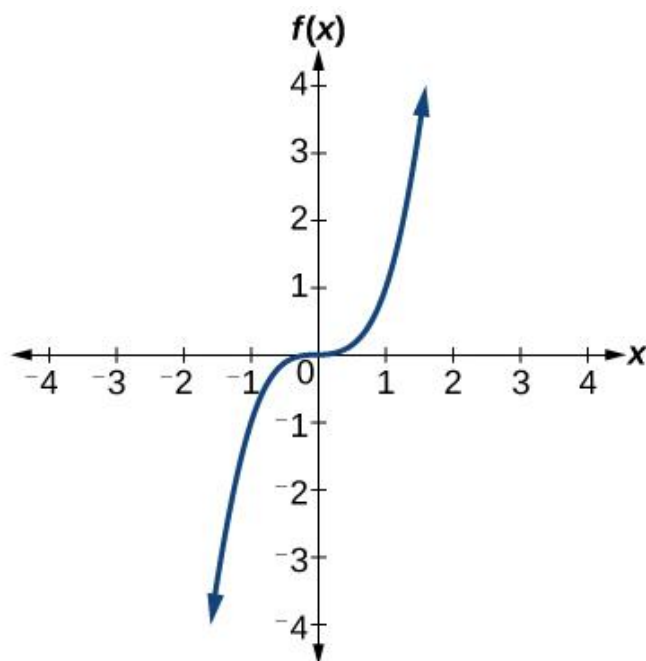
Practice 2-2-3:

Select the correct answer. Find the domain and range of the function f whose graph is shown.



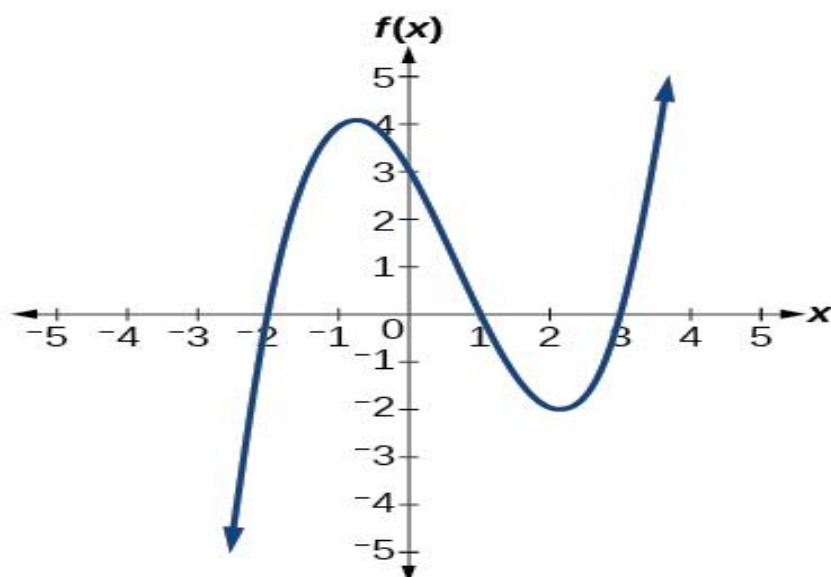
Practice 2-2-4:

Select the correct answer. Find the domain and range of the function f whose graph is shown.



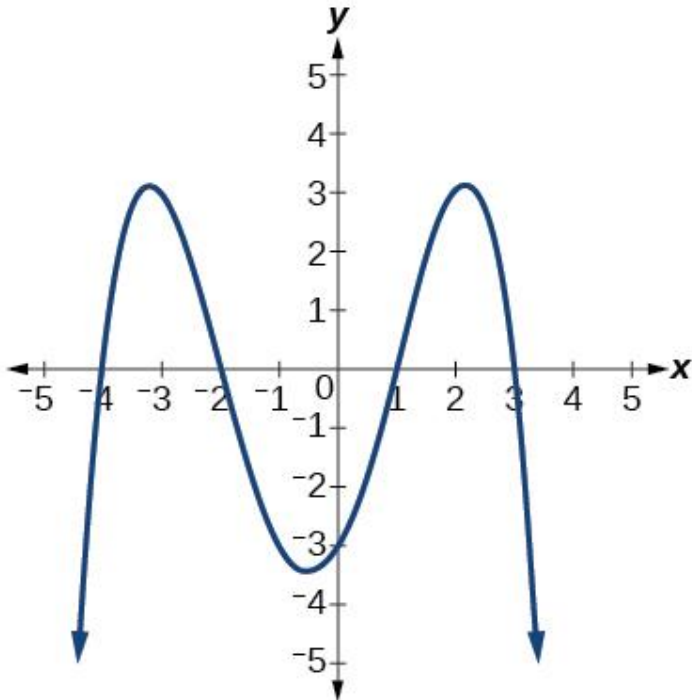
Practice 2-3-1:

Find the x-intercept(s) and y-intercept, entering value only and separate the answer with comma. For example: 1,2. If you can't find the intercept, please enter N/A.



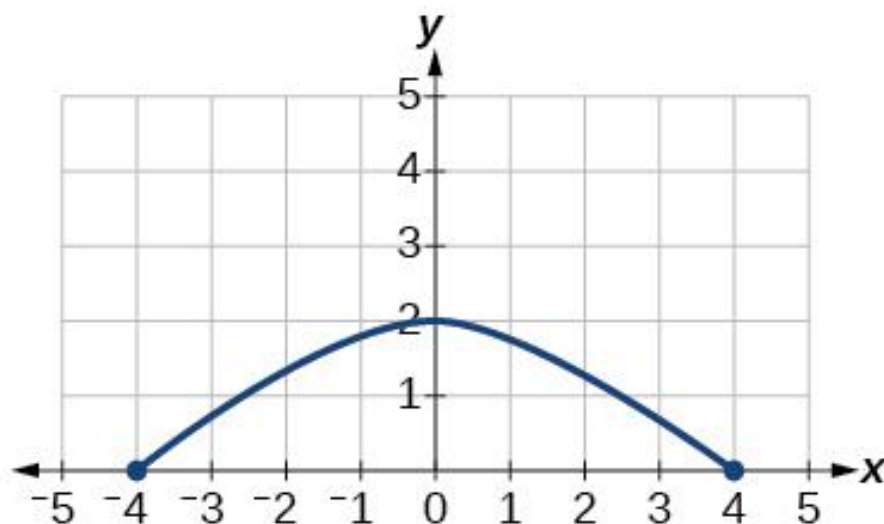
Practice 2-3-2:

Find the x-intercept(s) and y-intercept, entering value only and separate the answer with comma. For example: 1,2. If you can't find the intercept, please enter N/A.



Practice 2-3-3:

Find the x-intercept(s) and y-intercept, entering value only and separate the answer with comma. For example: 1,2. If you can't find the intercept, please enter N/A.



Practice 2-3-4:

Find the x-intercept(s) and y-intercept, entering value only and separate the answer with comma. For example: 1,2. If you can't find the intercept, please enter N/A.

